



Operating Instruction

SR 900 Half mask

General information

Together with filters from the Sundström filter range in accordance with EN 140:1998. Three sizes S, M and L.

Together with compressed air attachment SR 307, SR 507 and SR 358, SR 359 or SR 360 in accordance with EN 14594:2005, 3A

Together with powered air unit SR 500 or SR 700 in accordance with EN 12942:1998

Together with Remote filter holder SR 905 according to EN 12083.

When selecting equipment for SR 900 some of the factors that should be taken into account are as follows:

- Type of pollutant
- Concentrations
- Work intensity
- Protection requirements in addition to respiratory protective advice.

Risk analysis should be carried by a person who has suitable training and experience in the area.

Instructions for use for SR 900 should be read before use.

Unpacking SR 900 Packing list



Check that the equipment is complete in accordance with the packing list, and that no transport damages have occurred.

Packing list:

- Half mask
- Filter holder
- Pre-filter holder
- Pre-filter
- Cleaning tissue
- ID-tag
- User instructions
- Storage bag

Combination filters



During work in atmospheres containing both particles and gases (such as spray painting) the particle filters and gas filter should be combined.



Press the filters together so that the arrows on the particle filter point towards the gas filter.

Pre-filter



Pre-filter prevents premature clogging of the main filter. The pre-filter holder prevents damage to the main filter.

N.B. The pre-filter is a pre-filter only, and cannot be used as a substitute for particle filter P3 R.

To fit the filter in a mask

Check that you have selected the right filter and that the use-by-date has not been passed.





Fit the filter/combined filter in the mask so that the arrows on the filter points towards the user's face.

Carefully check that the edge of the filter is in the internal groove of the filter mounting all round.



Fit pre-filter SR 221 in the pre-filter holder and press it into place on the filter.

Fitting

Adjust the head harness so that the mask fits snugly and comfortably. It is important that the bands are placed according to the picture. Any other method will result in inadequate seal and less comfort.



Place the palm of your hand lightly over the hole in on the pre-filter holder.





Breathe in deeply and hold your breath.
If the seal is good, the mask will press against your face.
Inadequate fit may be caused by beard growth, stubble. Deep facial furrows or unusual face size.

Leakage may also occur if the exhalation membranes are soiled or defective.

Cleaning Daily maintenance



Remove the filter and the membranes.
Clean the mask with the Sundström antibacterial cleaning tissue SR 5226.



Check and replace worn or damaged parts. Pay special attention to the exhalation membranes. Making sure that they are clean and intact is as important as regular filter replacement.



Detach the filter holder from the mask by turning it a $\frac{1}{4}$ of a lap.



If gasket is in need of change.
Release the gasket from the attachment on the filter holder.

Mount the new gasket. Attach the filter holder by turning it a $\frac{1}{4}$ of a lap.



Detach the head harness.



Detach the filter holder from the mask by turning it a $\frac{1}{4}$ of a lap.



Use soft brush and clean with soapy water. Rinse and air dry.

Warning! Never use solvents for cleaning.

Storage



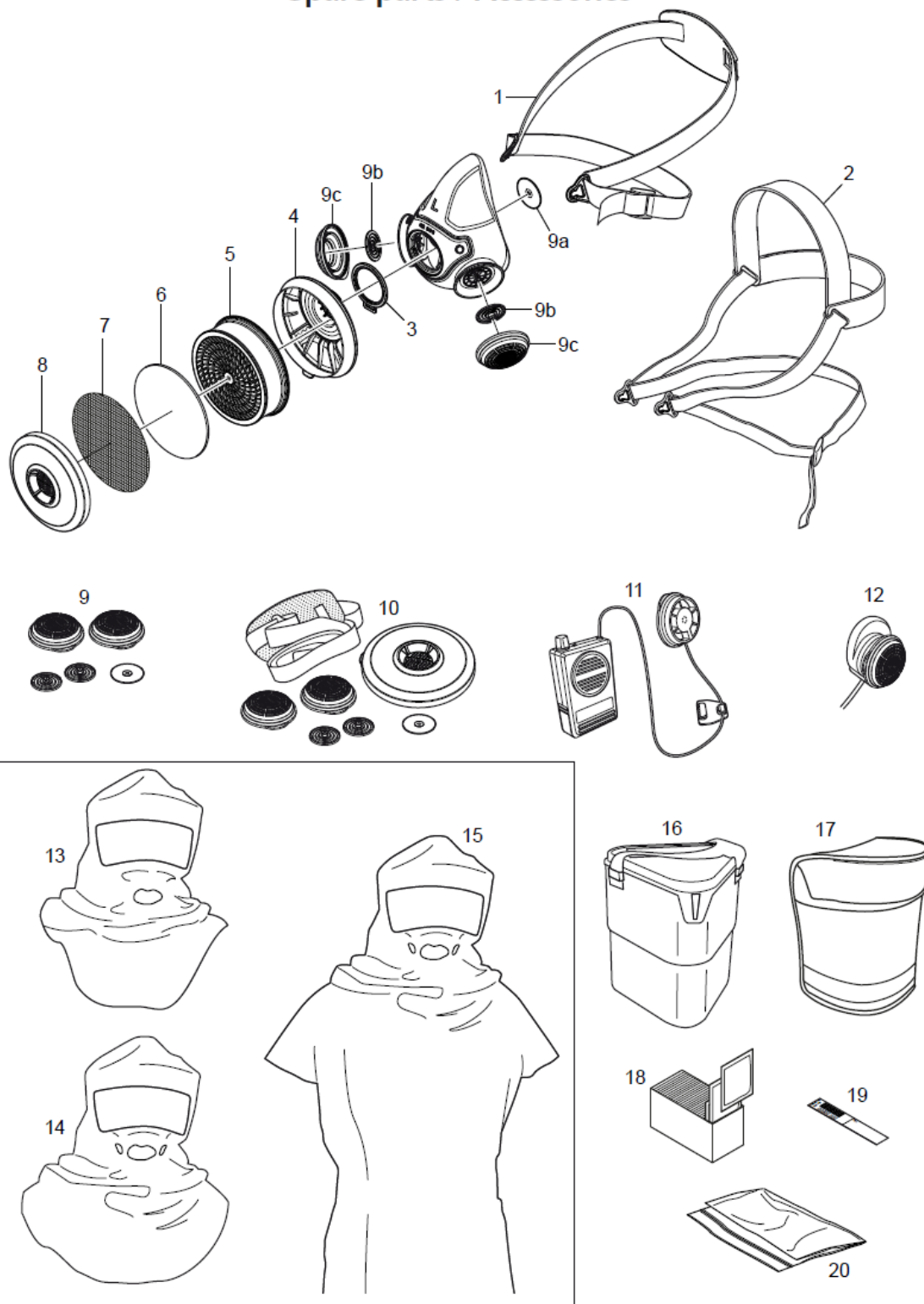
The best way to store the mask, clean and dry is in the Sundström storage box SR 230 or storage bag SR 339.



SR 900

EN

Spare parts / Accessories



No.	Description	Ordering No.
1.	Head harness, single strap	R01-3001
2.	Head harness, cradle strap	R01-3002
3.	Gasket	R01-3004
4.	Filter holder	R01-3003
5.	Particle filter P3 R, SR 510	H02-1312
	Gas filter	
	A1, SR 217	H02-2512
	A2, SR 218	H02-2012
	AX, SR 298	H02-2412
	ABE1, SR 315	H02-3212
	ABE2, SR 294	H02-3312
	K1, SR 316	H02-4212
	K2, SR 295	H02-4312
	ABEK1, SR 297	H02-5312
	Combined filter ABEK1-Hg-P3 R, SR 299-2	H02-6512
6.	Pre-filter, SR 221	H02-0312
7.	Steel net disc	T01-2001
8.	Pre-filter holder	R01-0605
9.	Membrane kit SR 369	R01-2004
9a.	Inhalation membrane x1	-
9b.	Exhalation membrane x2	-
9c.	Protective cap x2	-
10.	Service kit	R01-3005
1.	Head harness	
9.	Membrane kit	
8.	Pre-filter holder	
11.	Small talk/Voice amplifier SR 324	T01-1217
12.	Test adapter SR 328	T01-1202
13.	Protective hood, Tyvek, SR 64	H09-0301
14.	Protective hood, PVC, SR 345	H09-1012
15.	Protective hood, PVC, SR 346	H09-1112
16.	Storage box SR 230	H09-3012
17.	Storage bag SR 339	H09-0112
18.	Cleaning tissue SR 5226. Box of 50	H09-0401
19.	ID-tag	R09-0101
20.	Plastic storage bag, 50pcs	R01-0607